

# **DOMINATOR<sup>®</sup>**

---

## **INSTALLATION GUIDE**

---

### **ALUMINUM LIGHT POLE**

MODEL #: LP

- 
- SECTION 1:** Safety Instructions
  - SECTION 2:** Light Pole Specifications
  - SECTION 3:** Bolt Plate Installation
  - SECTION 4:** Hoop Installation
  - SECTION 5:** Warranties & Policies

# SECTION 1: SAFETY INSTRUCTIONS



## SAFETY INSTRUCTIONS



FAILURE TO FOLLOW THESE SAFETY INSTRUCTIONS MAY RESULT IN SERIOUS INJURY OR PROPERTY DAMAGE AND WILL VOID WARRANTY.

*Owner must ensure that all players know and follow these rules for safe operation of the system.*

To ensure safety, do not attempt to assemble this system without following the instructions carefully. Check the entire box and inside all packing material for parts and/or additional instruction material. Before beginning assembly, read the instructions and identify parts using the hardware identifier and parts list in the instructions. Proper and complete assembly, use, and supervision are essential for proper operation and to reduce the risk of accident or injury. A high probability of serious injury exists if this system is not installed, maintained, and operated properly.

- If using a ladder during assembly, use extreme caution.
- 2 capable adults are recommended for this operation.
- Assemble the base properly. Failure to do so could cause the base to separate.
- Before digging, contact your utility company to locate underground power cables, gas, and water lines. Ensure that there are no overhead power lines within 20 ft. (7m) radius of pole location.

*Most injuries are caused by misuse and/or not following instructions. Use caution when using this system.*



## WARNING



FAILURE TO FOLLOW THESE WARNINGS MAY RESULT IN SERIOUS INJURY AND/OR PROPERTY DAMAGE

- Do not hang from the pole.
- Do not slide, climb, or play on pole.
- When adjusting height or moving system, keep hands and fingers away from moving parts.
- During play, do not wear jewelry (rings, watches, necklaces, etc.).
- Check system before each use for loose hardware and instability. Repair before each use. Never play on damaged equipment.

**DOMINATOR**

801.768.4663



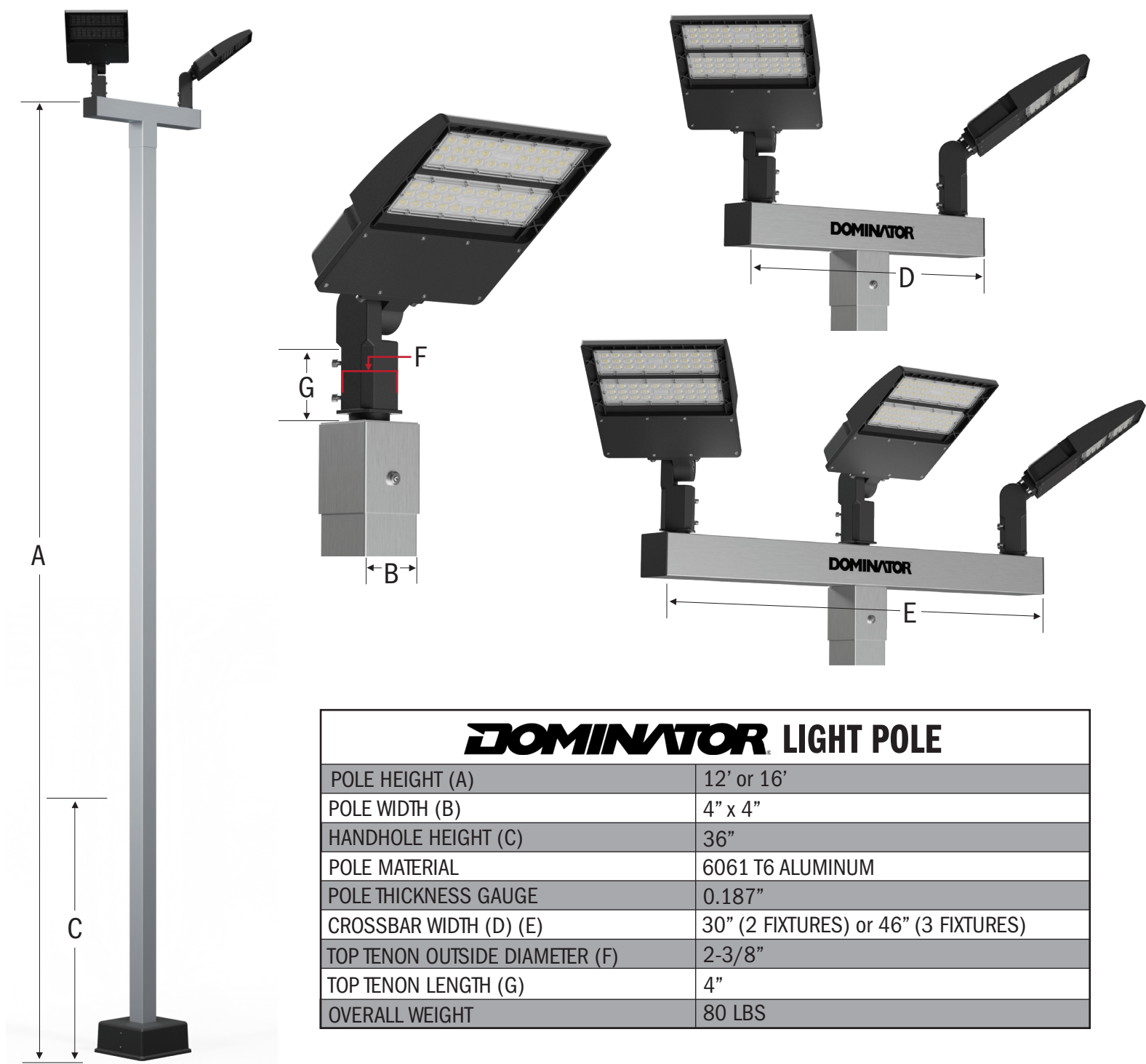
**Know what's below.  
Call before you dig.**

**1-888-258-0808**

**BEFORE** digging for the Bolt Plate installation, contact your local call-before-you-dig phone number so you don't unintentionally dig into an underground utility line.

\*Save this instruction sheet in the event that the manufacturer has to be contacted for replacement parts.

# SECTION 2: LIGHT POLE SPECIFICATIONS



<b>DOMINATOR LIGHT POLE</b>	
POLE HEIGHT (A)	12' or 16'
POLE WIDTH (B)	4" x 4"
HANDHOLE HEIGHT (C)	36"
POLE MATERIAL	6061 T6 ALUMINUM
POLE THICKNESS GAUGE	0.187"
CROSSBAR WIDTH (D) (E)	30" (2 FIXTURES) or 46" (3 FIXTURES)
TOP TENON OUTSIDE DIAMETER (F)	2-3/8"
TOP TENON LENGTH (G)	4"
OVERALL WEIGHT	80 LBS

## WHERE SHOULD I INSTALL MY LIGHT POLE?

A few questions to consider as you determine where to install your Dominator Light Pole:

- Are there any utility or sprinkler lines below the surface of the chosen location? (See Section 1: Safety Instructions)
- Will the light pole obstruct anything?
- If installing on a driveway, is there adequate room for vehicles to pull in/out without hitting the pole?
- What is your playing surface? Is it level ground or sloped?



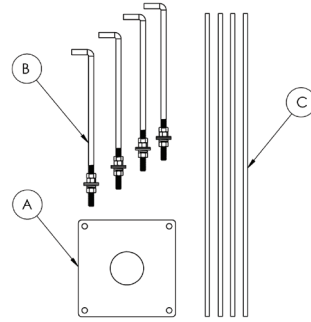
# SECTION 3: 10"x10" BOLT PLATE INSTALLATION

## DIMENSIONS

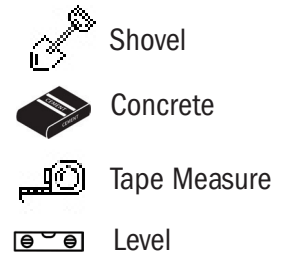
Hole Depth: 3'  
Hole Size: 2' x 2'

## PARTS USED

PART	PART DESCRIPTION	QTY
A	BOLT PLATE	1
B	J-BOLT + HARDWARE	4
C	REBAR	4



## TOOLS REQUIRED



## INSTRUCTIONS

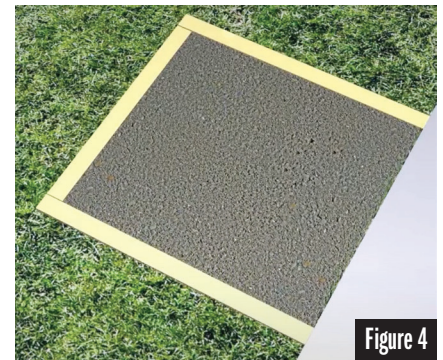
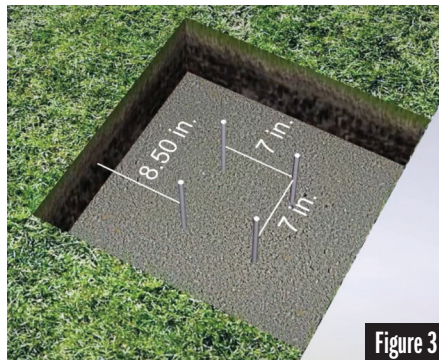
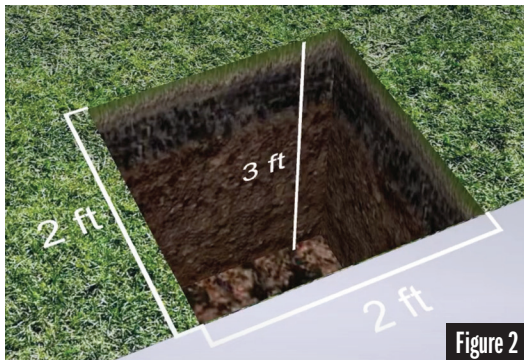
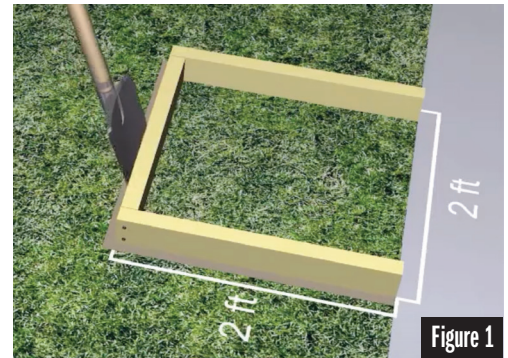
**STEP 1:** Build a 2' x 2' frame out of 2" x 4" lumber & lay it on the ground where you want the hoop installed. See Figure 1.

**STEP 2:** Using a shovel, cut into the ground around the outside of the frame to give the hole a defined edge; remove frame. See Figure 1.

**STEP 3:** Remove the frame and dig a square hole to the appropriate depth and dimensions shown in Figure 2.

**STEP 4:** Fill the hole half way with concrete and evenly space Rebar (Part C) in the dimensions shown in Figure 3. \*Note: Rebar is added to help reinforce & strengthen the concrete.

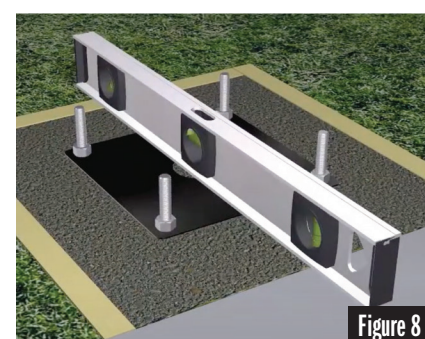
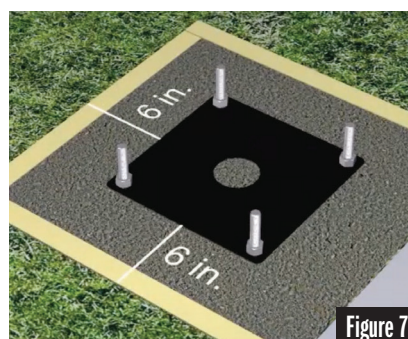
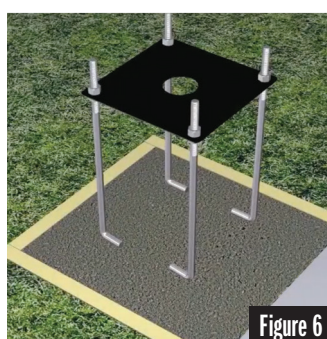
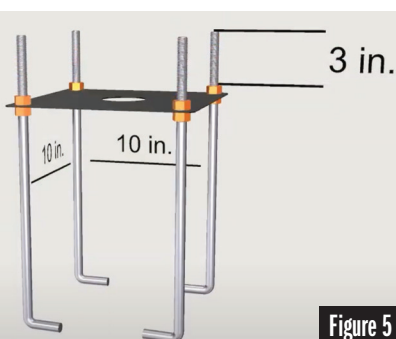
**STEP 5:** Continue filling hole with concrete until nearly full. Replace the frame and fill with cement until it is level with the playing surface. See Figure 4.



**STEP 6:**

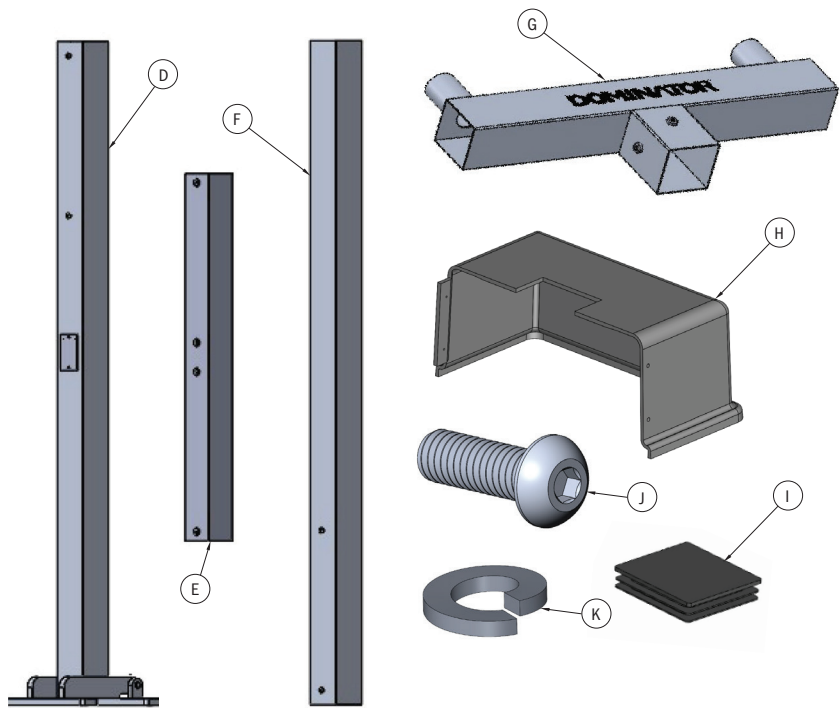
- Assemble the Bolt Plate (Part A) and J-Bolts + Hardware (Part B) using (8) 5/8" Nuts as shown in Figure 5. Set aside the rest of the hardware for the pole installation.
- Set the assembled Bolt Plate in the center of the 2' x 2' area parallel to the playing surface. See Figure 6.
- Measure the distance from the edge of the bolt plate to the edge of the frame to ensure it is centered. See Figure 7.

**STEP 7:** Make sure the Bolt Plate is level with the playing surface. See Figure 8. Let concrete dry 72 hours before removing frame & installing the pole.



# SECTION 4: LIGHT POLE INSTALLATION

\*INSTALLATION REQUIRES 2-3 ADULTS MINIMUM. ENSURE BOLT PLATE & CONCRETE HAS HAD AT LEAST 72 HOURS TO SET.



## TOOLS REQUIRED

- Phillips Head Screwdriver
- Allen Wrench: 7/32"
- Crescent Wrench

## PARTS USED

PART	PART DESCRIPTION	QTY
D	TUBE 1 WITH BASE	1
E	TUBE 2	1
F	TUBE 3	1
G	BULL HORN	1
H	ANCHOR COVER W/ HARDWARE	1
I	END CAPS	2
J	BOLT (SIZE??)	8
K	LOCK WASHERS (SIZE??)	8

## INSTRUCTIONS

**STEP 1:** Connect Tube 1 (Part D), Tube 2 (Part E) and Tube 3 (Part F) in the order shown below. See Figure 1 and Figure 2.

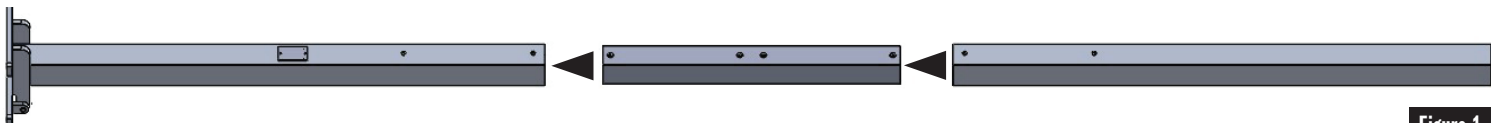


Figure 1

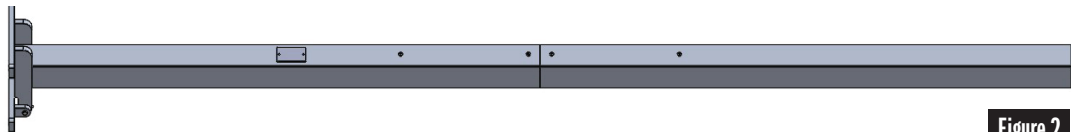


Figure 2

**STEP 2:** Secure the pole tubing with Bolts (Part J) and Lock Washers (Part K). See Figure 3. Hand tighten.

**STEP 3:** Wired Light System: Run the wiring through the pole from the bottom to the top. We recommend using a licensed electrician for this step.

Solar Light System: Continue to Step 5.

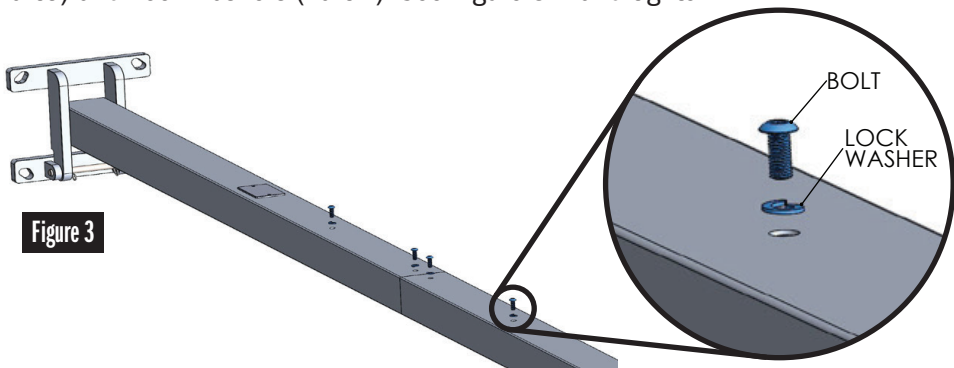
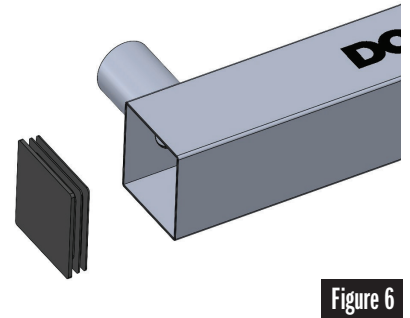
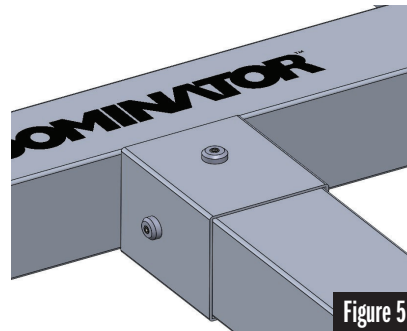
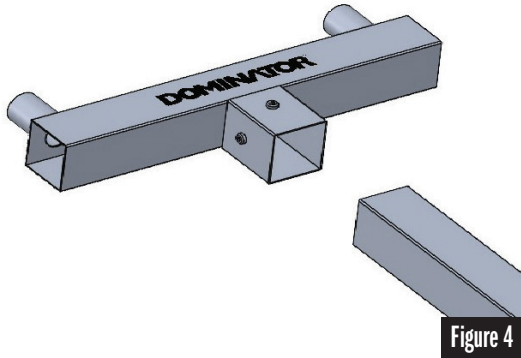


Figure 3



**STEP 4: Wired Light System:**

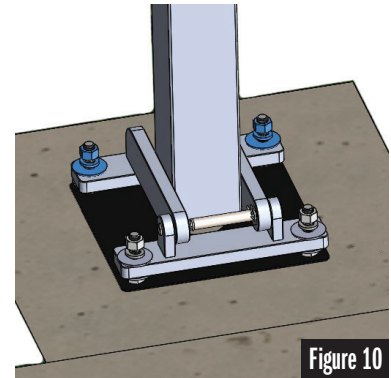
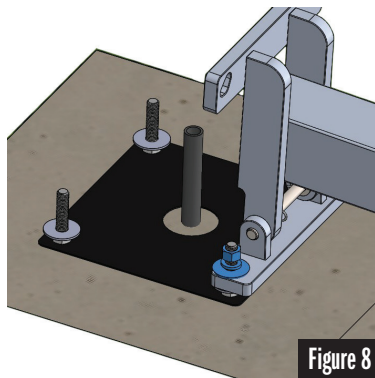
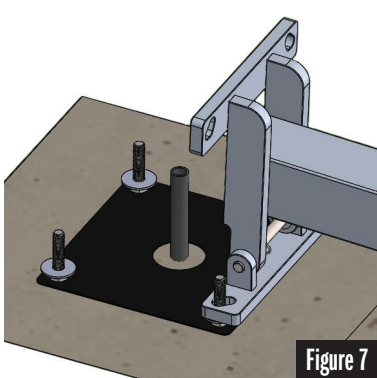
- A. Feed wire from conduit at the bottom of the Light Pole up to the top of the pole.
- B. Secure Light Fixture onto the Top Tenon of the Bullhorn (Part G) and adjust to desired angle. Hand tighten set screws on fixture to the tenon.
- C. Feed Light Fixture wire through Bullhorn to the wire at the top of the Light Pole. (Repeat A, B and C for multiple light fixtures.)
- D. Attach Bullhorn (with Light Fixture(s) wired) onto the top of the Light Pole. See Figure 4.
- E. Secure with Bolts (Part J) and Lock Washers (Part K). See Figure 5. Hand tighten.

**STEP 5: Solar Light System:**

- A. Attach Bullhorn (Part G) to the top of the Light Pole. See Figure 4.
- B. Secure with Bolts (Part J) and Lock Washers (Part K). See Figure 5. Hand tighten.
- C. Secure Light Fixture onto the Top Tenon of the Bullhorn and adjust to desired angle. Hand tighten set screws on fixture to the tenon. (Repeat this step for multiple light fixtures.)

**STEP 6: Secure End Caps (Part I) on the Bullhorn. See Figure 6.**

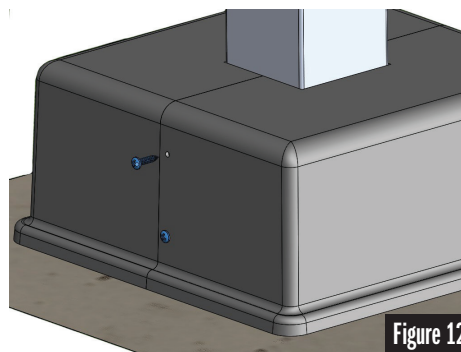
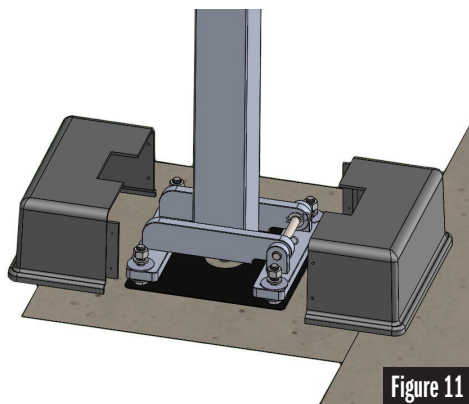
- STEP 7:**
- Using the hardware you set aside from Step 6 on the Bolt Plate Installation page, place (4) Flat Washers on the J-Bolts of the anchor plate.
  - Slide the Light Pole onto the J-Bolts with the hinge side closest to the court & the slotted holes furthest away. See Figure 7.
  - Secure front, courtside bolts with (2) Flat Washers, (2) Lock Washers and (2) 5/8" Nuts. See Figure 8.
  - Hand tighten only.



- STEP 8:**
- Raise the Pole until it is standing straight up. Hold the Pole in position for the following steps. See Figure 9.
  - Secure remaining two bolts with (2) Flat Washers, (2) Lock Washers and (2) 5/8" Nuts. See Figure 10.
  - Tighten with socket wrench.

**STEP 9:**

- Remove the screws from the Anchor Cover (Part H). See Figure 11.
- Encase the bottom of the Light Pole with the Anchor Cover and secure the two halves with the (4) screws. See Figure 12.



# SECTION 5: WARRANTIES & POLICIES



## BASKETBALL STANDARD LIMITED LIFETIME WARRANTY

Subject to the limitations set forth below, HomeSports (the “**Manufacturer**”) warrants to the original consumer purchaser (the “**Purchaser**”) of the Dominator Basketball Standard (hereinafter referred to as the “**Dominator**”) that the Dominator shall be free from material defects in parts and/or workmanship that impair the use of the Dominator for so long as the Purchaser owns the Dominator.

1. This Warranty is non-transferable and is expressly limited to the repair or replacement of a defective Dominator, including any part thereof, covered under this Warranty.
2. To make a claim under this Warranty, the Purchaser must first write the Manufacturer at 930 W 410 N, Suite 100, Lindon, UT 84042, to receive a Return Authorization number and/or determine specific needs.
3. The Manufacturer reserves the right to examine photographs and/or physical evidence of a Dominator claimed to be defective and to recover said Dominator pursuant to the terms of this Warranty, prior to authorization of a claim under this Warranty
4. Unless indicated otherwise by the Manufacturer, in order to determine whether a requested repair is covered under this Warranty, the Dominator must be shipped prepaid to the Manufacturer with a copy of the relevant proof of purchase. The Manufacturer will not be responsible for any loss or damage incurred in connection with the return of a Dominator or its parts to Manufacturer under this Warranty. The manufacturer will examine the Dominator so shipped and, in its sole and reasonable discretion, will determine (1) whether this Warranty covers the Dominator and, if it does, (2) whether the Dominator needs to be repaired or replaced. Any and all dealer service charges, labor costs, shipping costs, insurance, travel expenses and any other charges or costs involved in the removal, installation or replacement of a defective Dominator, including, but not limited to, any part thereof, covered under this Warranty, will be the sole responsibility of the Purchaser and must be prepaid. Any Dominator, including any part thereof, shipped to the Manufacturer “collect” will be refused.
5. THIS WARRANTY IS VOID IF THE DOMINATOR HAS BEEN DAMAGED BY ACCIDENT, UNREASONABLE USE AND/OR ABUSE, NEGLIGENCE, IMPROPER SERVICE, IMPROPER INSTALLATION OR HANDLING, FAILURE TO FOLLOW PROVIDED INSTRUCTIONS (INCLUDING WITHOUT LIMITATION USING THE DOMINATOR AT PROHIBITED HEIGHT LEVELS), SHIPPING, VANDALISM, ACTS OF GOD, ENVIRONMENTAL FACTORS, ALTERATION OF THE DOMINATOR, OR ANY OTHER EVENTS BEYOND THE CONTROL OF THE MANUFACTURER OR OTHER CAUSES NOT ARISING OUT OF DEFECTS IN MATERIAL OR WORKMANSHIP.
6. USING THE DOMINATOR FOR OTHER THAN RESIDENTIAL BASKETBALL USE WILL ALSO VOID THIS WARRANTY.
7. HANGING FROM THE NET OR RIM WILL ALSO VOID THIS WARRANTY: Rims are not warranted for any defects other than workmanship. Torn back plates, damaged springs, bent rings, damaged eyebolts and torn or distorted rim supports result from hanging on the rim are not warranted.
8. THIS WARRANTY DOES NOT COVER SCRATCHING OR SCUFFING OF THE DOMINATOR THAT MAY RESULT FROM NORMAL USAGE. THIS WARRANTY ALSO DOES NOT COVER RUSTING PARTS, FADING PAINT, CRACKS THAT DO NOT AFFECT THE FUNCTIONALITY OF THE PRODUCT, OR OTHER DAMAGE CAUSED BY WEATHER OR CLIMATE CONDITIONS OR EXPOSURE TO CORROSIVES SUCH AS SALTS, PESTICIDES, ET
9. This warranty gives the Purchaser specific legal rights, and such Purchaser may also have other rights which vary from state to state.
10. THIS WARRANTY IS GIVEN EXPRESSLY IN LIEU OF ALL OTHER EXPRESS WARRANTIES. ANY IMPLIED WARRANTY ARISING OUT OF THE SALE OF THE DOMINATOR, INCLUDING, BUT NOT LIMITED TO, THE IMPLIED WARRANTIES OF MERCHANTABILITY AND FITNESS FOR A PARTICULAR PURPOSE, IS LIMITED IN DURATION TO THE DURATION OF THIS WARRANTY.
11. Some states do not allow limitations on how long an implied warranty lasts, so the above limitation may not apply to certain Purchasers.
12. THE REMEDY OF REPAIR OR REPLACEMENT STATED ABOVE SHALL BE THE PURCHASER'S EXCLUSIVE REMEDY. THE MANUFACTURER DOES NOT ASSUME OR AUTHORIZE ANY PERSON OR REPRESENTATIVE TO ASSUME ON ITS BEHALF ANY OTHER LIABILITY IN CONNECTION WITH THE SALE OF A DOMINATOR. THE MANUFACTURER SHALL NOT BE LIABLE FOR (A) ANY DAMAGES OR EXPENSES THAT MAY OCCUR, INCLUDING, BUT NOT LIMITED TO, INCIDENTAL, SPECIAL OR CONSEQUENTIAL DAMAGES, ARISING OUT OF OR IN CONNECTION WITH THE DELIVERY, INSTALLATION, USE, PERFORMANCE AND/OR REMOVAL OF THE DOMINATOR (INCLUDING, BUT NOT LIMITED TO, DAMAGE TO CONCRETE OR THE PURCHASER'S YARD); (B) ANY OTHER CLAIM ARISING FROM NEGLIGENCE, STRICT LIABILITY, OR BREACH OF CONTRACT REGARDING THE DOMINATOR; OR © OTHER DAMAGES WITH RESPECT TO ANY ECONOMIC LOSS, LOSS OF PROPERTY, LOSS OF ENJOYMENT OF USE, COSTS OF INSTALLATION AND/OR REMOVAL, OR OTHER CONSEQUENTIAL DAMAGES FOR BREACH OF ANY EXPRESS OR IMPLIED WARRANTY COVERING THE DOMINATOR.
13. Some states do not allow the exclusion or limitation of incidental or consequential damages, so the above limitation or exclusion may not apply to certain Purchasers.
14. While the Manufacturer has made attempts to ensure that the Dominator is safe to use, freedom from injury cannot be guaranteed. The Purchaser assumes all risk of injury resulting from the use of the Dominator. All Dominators are sold subject to this condition, and no representative of the Manufacturer may waive or change this policy.



# **DOMINATOR®**

## **BASKETBALL STANDARD SHIPPING POLICY**

This Return Policy applies to the purchase of the Dominator® Basketball Standard (hereinafter referred to as the “Dominator”) by the original consumer purchaser (“you” or the “Purchaser”) from Leap Innovations (the “Manufacturer”).

1. Any offer for free shipping by the Manufacturer applies ONLY to shipments within the domestic 48 continental United States. Please contact us at 1-877-705-6556 for a shipping quote for deliveries to Alaska, Hawaii, Canada, Mexico, or other locations outside of the United States.
2. If the shipping address is changed during shipping, additional charges may apply.
3. Shipping dates are approximate and Manufacturer does not guarantee estimated delivery dates. Manufacturer is not liable under any circumstances for any delay in shipment or delivery.
4. The shipping carrier's appointment clerk should call you to set up a time for delivery. Time of delivery is usually between 8:00am and 5:00pm Monday through Friday, but delivery may occur outside of those hours depending on other factors.
5. The Dominator is shipped for “Curbside Delivery” and does not include set up or assembly of the Dominator. Shipping includes removing the order from the truck and depositing it at your curbside or in your driveway. Any additional requests you make of the deliverer may result in additional charges, which will be billed to you.
6. It is your responsibility to verify the delivery for correctness. You should confirm the correct number of boxes has been delivered to you. The Dominator 72 XL and 60 XL has 3 boxes and will come on 1 pallet.
7. You should also carefully inspect all items (especially the glass backboard) prior to signing for the delivery for damage during transit and take photographs of the damage.
8. If there is any damage to the Dominator, YOU MUST NOTE THE DAMAGE ON THE DELIVERY RECEIPT. The carrier, not the Manufacturer, is liable for damage to the Dominator during transit. If you sign the delivery receipt without noting the damage, you thereby release the carrier of all liability.
9. A signature is required for all deliveries. You will be required to sign a delivery receipt and delivery will not occur without it.
10. DO NOT REFUSE DELIVERY IF THE DOMINATOR, OR ANY PORTION THEREOF, IS DAMAGED. Simply note the damage on the delivery receipt and contact us at 801-768-4663 to receive a replacement part.
11. If a certain part, such as the glass backboard, is damaged, you may still keep and install the additional working parts while the replacement part is being delivered.
12. Please note, if you live down a road or driveway that the delivery truck cannot traverse, the delivery will not be completed. You may be required to pick up the order from the nearest carrier terminal.
13. Any order returned to Manufacturer marked undeliverable or similar is subject to a 15% restocking fee and any shipping charges incurred by Manufacturer for the initial shipment to the Purchaser will be charged to the Purchaser.

# **DOMINATOR®**

## **BASKETBALL STANDARD RETURN POLICY**

This Return Policy applies to the purchase of the Dominator® Basketball Standard (hereinafter referred to as the “Dominator”) by the original consumer purchaser (“you” or the “Purchaser”) from Leap Innovations (the “Manufacturer”).

1. The Purchaser may cancel an order before shipment and receive a full refund of the amount paid. Orders are normally shipped within 48 business hours and are sometimes shipped the same day.
2. The Purchaser may return an order within 7 days of receipt of the Dominator by the Purchaser to receive a partial refund. All returns are subject to a 15% re-stocking fee. The Purchaser is responsible for initial shipping fees upon return of the Dominator and any offer for free shipping is surrendered upon return. Except as provided in
3. Manufacturer's limited lifetime warranty, Manufacturer has sole discretion to reject a request for cancellation or return.
4. The Dominator must be unused, in the original shipping boxes and packaging, to be eligible for a refund.
5. Notwithstanding the above paragraphs, Purchaser shall have no right to cancel or return custom-made products.
6. To make a return, the Purchaser must first contact the Manufacturer at 1-877-705-6556 to receive a Return Authorization number and/or determine specific needs. YOU MUST HAVE A RETURN AUTHORIZATION NUMBER OR YOUR RETURN WILL NOT BE PROCESSED.
7. The Purchaser must ship the Dominator to the Manufacturer with proof of purchase. Any and all dealer service charges, labor costs, shipping costs, insurance, travel expenses and any other charges or costs involved in the return of a Dominator, will be the sole responsibility of the Purchaser and must be prepaid. The Manufacturer will not be responsible for any loss or damage incurred in connection with the return of a Dominator or its parts to Manufacturer. Any Dominator, including any part thereof, shipped to the Manufacturer “collect” will be refused.